

ADJUSTABLE WASTE GATE LOCK INSTALL INSTRUCTIONS

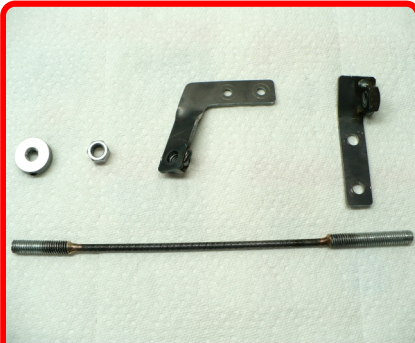


Photo of Adjustable Waste Gate Kit Contents



Step 1: Remove complete exhaust system and unbolt *Steering Shaft* at the top only.



Step 2: Remove the 3 locknuts from the Turbo Support Bracket.



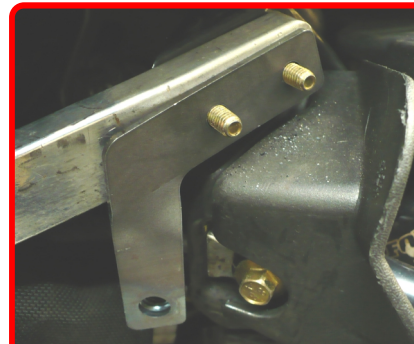
Step 3: Install Inner Bracket using the factory lock retainer & lock nuts.



Step 4: Check for proper alignment of the bracket to the lever. The lever is to be centered with the threaded nut. Adjustment may be necessary by using a small wrench or vice-grips to bend the tab.



Step 5: Remove the 2 nuts on the Muffler Support Spar.



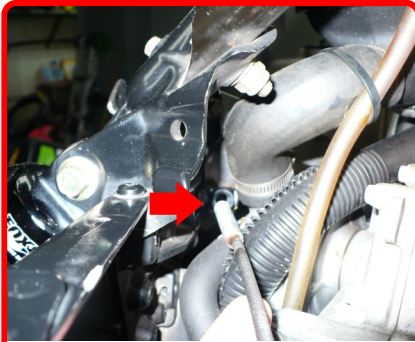
Step 6: Install the "L" Bracket and secure with the two (2) locknuts. Brackets may also require bending for proper alignment.



Step 7: Apply Anti-Seize to threads of each end of the Lock Cable.



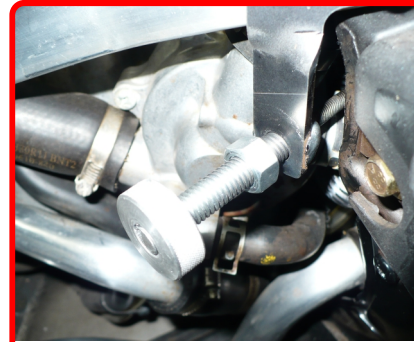
ADJUSTABLE WASTE GATE LOCK INSTALL INSTRUCTIONS



Step 8: Install the long threaded end of the Lock Cable through the nut of the "L" Bracket.



Step 9: Thread the Lock Cable all the way to the end.



Step 10: Install the Lock Nut followed by the Thumb Nut until flush with the threaded end. Lock Set Screw in the Thumb Nut.



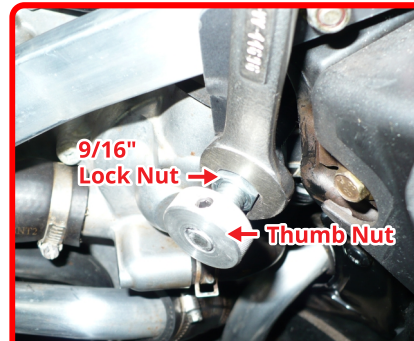
Step 11: While holding the small threaded end of the Lock Cable to the Inner Bracket Nut, rotate the Lock Cable clockwise so the inner threaded portion screws into the inner nut.



Step 12: Installed Lock Cable.



Step 13: Continue screwing the Lock Cable until contact with the lever is made. this is the **Locked Position** of the Waste Gate.
CAUTION: DO NOT USE EXCESSIVE FORCE TO TIGHTEN AS IT IS NOT REQUIRED.



Step 14: Use finger tight pressure ONLY on the Thumb Nut. Then tighten 9/16" Lock Nut until secure.



To Unlock Waste Gate: Loosen the 9/16" Lock Nut, then simply rotate the Thumb Nut counter-clockwise four (4) to five (5) turns only. Then re-tighten the 9/16" Lock Nut.

NOTE: Be sure to Reinstall Exhaust System & Upper Steering Shaft Bolts